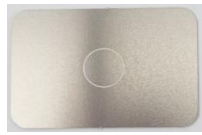


Case Soil[®] Wash Indicator

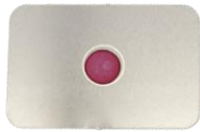
Interpreting test results and failure troubleshooting guide for Automated Washer/Disinfector



PASS A clean coupon shows no visible residue and indicates a pass.

FAIL

Red, pink, white, or filmy residue indicates a failure. For any failure, investigate the cause and re-test under the same conditions.



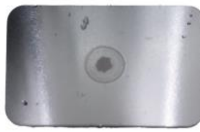
Red = Load was not processed, machine non-functional, improper placement of indicator in washer with no contact with wash water (*review sections 1 and 3 below*)



Pink = No detergent dispensed, low temperature, improper placement of indicator, poor impingement in washer, blocked spray arms (*review sections 1, 2, and 3 below*)



White = Clogged drain, overloaded washer, improper placement of indicator, adequate impingement but cold temperature, inadequate rinse, hard water deposits (*review sections 1, 3, and 4 below*)



Film = Check machine parameters for contact time and temperature, insufficient impingement, equipment maintenance, improper loading, water quality, detergent residue (*review sections 3 and 4 below*)

1. Check Case Soil Test Placement

- Verify **correct test placement**:
 - test coupon is placed in Case Soil Holder with lid closed
 - in an instrument basket or tray, where there is direct contact with detergent/wash water
 - If a spray arm is clogged and not spinning, the indicator placed at that location will not clear

2. Check Cleaning Solution

- Check the **level of the cleaning solution** in the bottle to ensure detergent is being dispensed
- Verify that cleaning solution has not reached its **expiration date**
- Check that cleaning solution is **not stored near a heat source**
- Ensure instrument chemistries are **properly aligned** for dispensing
- Ensure **different brands of chemicals** or cleaning solutions are not combined
- Ensure that chemicals in use are **appropriate for use** for reprocessing surgical devices
- Confirm you are using a **low-foaming detergent**
- Verify that a rinse follows the detergent step

3. Check Equipment

- Check washer cycle parameters for:
 - correct **cycle time**
 - correct **cycle temperature**
 - ensure **proper dosage or dilution rate** is set for the cleaning solution
 - thorough **rinsing** after each wash step
- Inspect **sprayer arm jets** for clogs or debris
- Ensure nothing is obstructing **spray arm movement**
- Confirm appropriate **wash pressure**
- Check that **drain is clear** of debris
- Check **wash chamber filters**
- Check **tubing, pump, and reservoir** for damage, restrictions, or leaks

4. Check Water Quality and Pressure

- Examine the condition of the **water filter**, clean if necessary
- Test for water quality, including total dissolved solids (TDS), hardness, alkalinity, chlorine
- Contact management or facility maintenance for **water quality** or **water pressure** issues